

MAY 6 2010

James V. Johnson

CERTIFICATE OF LOCATION OF GOVERNMENT CORNER

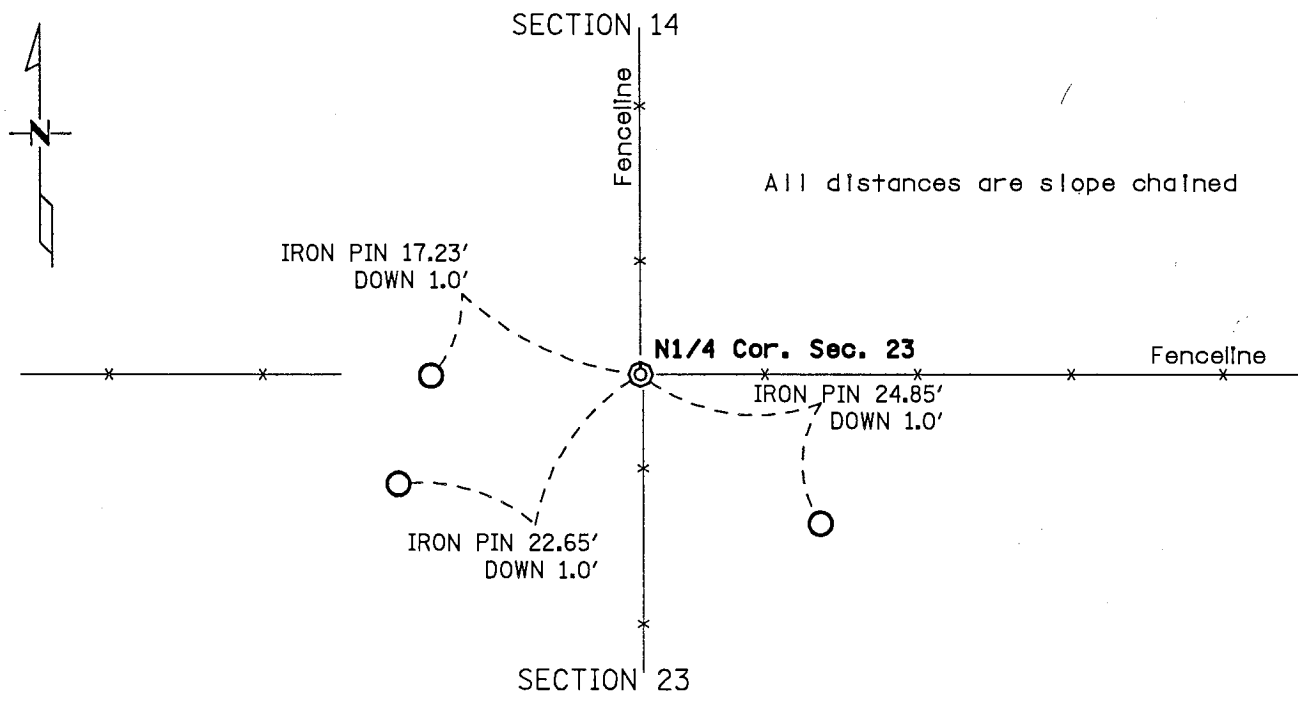
NORTH QUARTER Corner of Section 23, Township 107, Range 41
5th Principal Meridian, State of Minnesota, County of MURRAY

At the corner location shown on the sketch:

On NOV 19, 2009 found an Minnesota Department of Transportation cast iron
DATE
monument.

left monument as found lowered monument removed monument (explain)

On _____ placed a _____
DATE



Statement of evidence for this corner location is on back of this page.

I hereby certify that this document was researched and prepared by me or under my direct supervision.

Signature Matthew J. Schlager

Date 04-26-2010

License No. 24640

Title: Land Surveyor Professional Engineer County Surveyor County Engineer

Certificate of Location of Government Corner

North Quarter Corner, Section 23, Township 107 North, Range 41 West

November 2009 A Mn/DOT survey crew, (crew chief Jeff Balbach) found the Minnesota Department of Transportation Cast Iron Monument set by Duane Bonnema in 1989. The chain ties were updated.

For a more complete history of this corner, refer to the Certificate of Location of Government Corner Document filed with the Murray County Recorder on November 15, 1989.